



**INSTITUTE OF ENERGY AND FUEL  
PROCESSING TECHNOLOGY**

Zamkowa 1  
41-803 Zabrze  
Poland

tel. 4832 271 00 41  
fax 4832 271 08 09  
office@itpe.pl

...we implement innovative technologies!

**www.itpe.pl**

# EXPERT SERVICES

# IN

# ENVIRONMENTAL ENGINEERING

## **Integrated Environmental Permit**

– for installations, operation of which can results in pollution of environment or its elements – it is a duty of every installation operator assigned by Environmental Protection Act (EPA).

The Institute offers services in the field of preparation of industrial plants to obtain or actualize The Integrated Environmental Permit, including baseline report elaboration, according to EPA, Industrial Emissions Directive (IED) and BAT conclusions.

The Head of the Team  
Jolanta Telenga-Kopczyńska PhD  
phone: 4832 6216350  
cell: 48 600 164 741  
jtelenga@itpe.pl

## OFFER

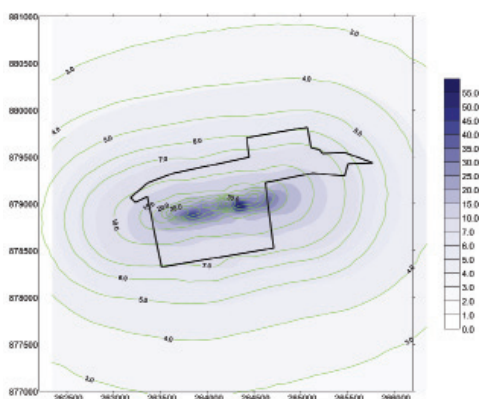
- Elaboration of application for obtainment or actualization of IEP
- Elaboration of analysis of risk of soil, ground and groundwater pollution (baseline report)
- Modelling of pollution distribution from heat and power production, Industrial processes (metallurgy, cokemaking, etc.), landfill sites
- Consulting services in the field of techniques and investments on environmental protection systems

## CUSTOMERS

- Power Plants
- Heat and Power Plants
- Metallurgy and Cokemaking Plants
- Other installations obliged for IEP obtainment, e.g. waste firing or sorting plants, wastewater treatment plants, etc.

## REFERENCES

- „Smart Coke Plant meeting BAT requirements” Project no POIG.01.01.02-24-017/08; research topics: “Air pollutants distribution model in the cokemaking plant neighborhood” and “Ecological monitoring on-line system model for coke oven battery including fugitive emission monitoring”
- “Guidebook on pollutants release and transfer to environment from cokemaking plants in Poland” red. A.Sobolewski, Institute for chemical Processing of Coal Publisher, Zabrze, 2010, 151 pages. ISBN 83-913434-9-4
- „Best Available Techniques (BAT) guidelines for cokemaking industry”, red. A.Sobolewski, M.Ściążko, Institute for chemical Processing of Coal Publisher, Zabrze, 2006, 115 pages. ISBN 83-913434-2-1



The map of distribution of pollutants from an industrial plant

